

Create Art Like Alfred Sisley

Step-by-Step: Create a simple Sisley-inspired **river landscape**

Sisley painted in the **Impressionist style**, which meant:

- **Short, quick brushstrokes** to show movement and light
- **Soft, natural colours** rather than bold outlines
- He often painted "**en plein air**" (outdoors), using portable oil paints to capture real-life light and weather effects

Oil paints were ideal for this because they **blend well**, **dry slowly**, and allow for **layering** — perfect for showing shimmering water, cloudy skies, and leafy trees!

Step 1: Draw the River

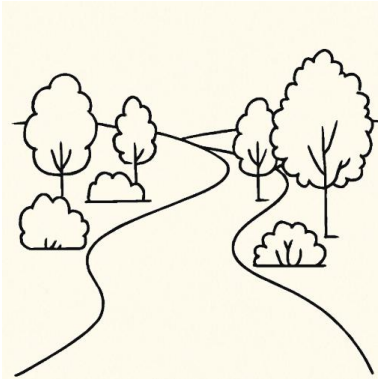
Sketch a river curving through the middle of your page from the bottom to the top.



Step 2: Add Nature

Pencil in some trees and bushes along both sides of the river. Try making each tree different!

Create Art Like Alfred Sisley



Step 3: Light Sky


Use soft strokes of **blue, white, and pink** for a bright sky with light clouds.



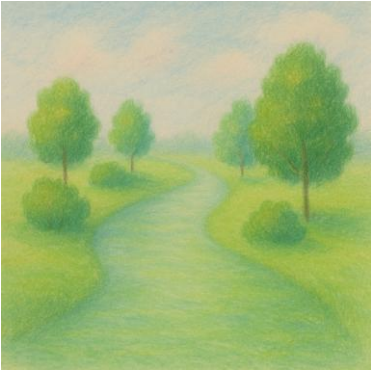
Step 4: Colour the Trees and Grass

Now it's time to **bring the landscape to life!** Use **greens, yellows, and soft browns** to colour the **trees, bushes, and grassy banks**. Use **small dabs or strokes** to show leaves and textures.

- **Trees:** Use **light and dark green** to add variety to the leaves
- **Grass:** Blend **yellow-green and soft blue-green** for a natural look
- **Bushes:** Try using short, curved strokes to build up texture

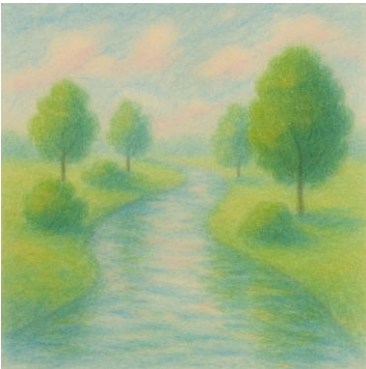
 Tip: Like Sisley, keep your colours **soft and natural**, and **don't worry about staying perfectly inside the lines** — Impressionists wanted to show feeling, not exactness!

Create Art Like Alfred Sisley



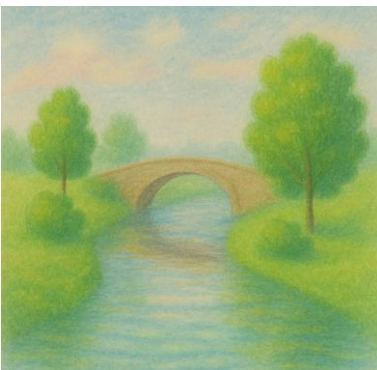
Step 5: Reflections in the Water

Add reflections of trees and sky in the river using wavy lines of **muted colours**.



Step 6: Final Touches

Add a small **bridge** or **cottage** in the background. Keep your colours gentle and light.



Create Art Like Alfred Sisley

Additional Art Ideas

- Paint your **local river or park** like Sisley would — try working outdoors!
- Create a **seasonal version**: paint the same river in **autumn**, **spring**, or **winter**.
- Make a **mini gallery**: paint three small square landscapes and hang them side by side.
- Try painting with **only 4 colours** to explore light and shade, like the Impressionists!