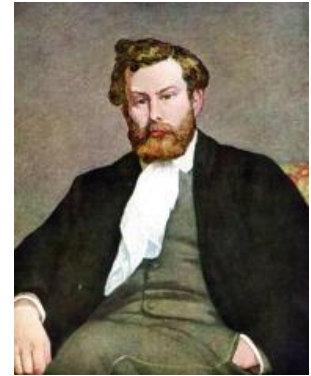


What Did Alfred Sisley Create?

Alfred Sisley was a **landscape painter** who loved painting **outdoors**. He captured peaceful **rivers, trees, skies, and countryside scenes** using soft colours and light brushstrokes. Sisley was part of the **Impressionist movement**, just like Monet and Renoir!



🧒 Childhood

- Alfred Sisley was born in **Paris, France**, in **1839**.
 - His parents were from **England**, so he was actually **British**!
 - His father ran a successful business selling **silk**.
 - Alfred loved nature from a young age and liked walking in the countryside.
-

🎓 Education

- When he was 18, Sisley moved to **London** to study business — but he didn't enjoy it!
 - He returned to Paris and joined the **École des Beaux-Arts** (School of Fine Arts).
 - There, he studied painting under **Charles Gleyre**.
 - He met future famous artists there, like **Claude Monet** and **Pierre-Auguste Renoir**.
-

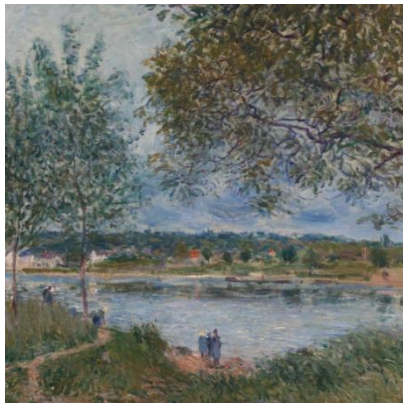
👨 Career

- Sisley painted **outdoors**, which was unusual at the time!
- He mostly painted **landscapes**, especially of **rivers** and **bridges**.
- He took part in the first **Impressionist exhibition** in 1874.
- He liked to work *plein aire*, which means outside in the open air, most of his work was created on site.
- Even though he didn't become rich, today his work is **celebrated around the world**.



The Bridge at Sèvres

View of the Thames:
Charing Cross Bridge



The Path to the Old Ferry at By

The Small Meadows in Spring



Quotes from Alfred Sisley

“Every picture shows a spot with which the artist has fallen in love.”

“The animation of the light, the trembling of the leaves in the breeze — that is what I seek to paint.”