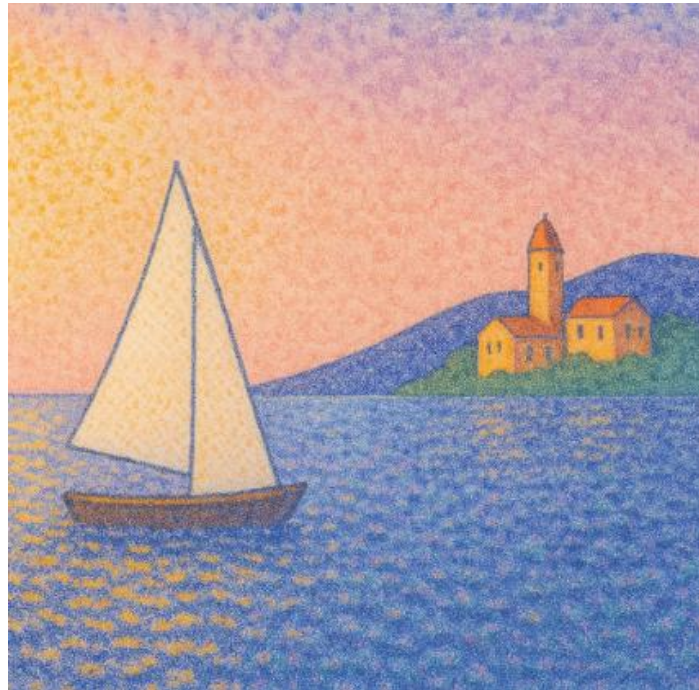


## Step-by-Step Tutorial: Paint a Pointillism Seascape



### Step 1: Sketch the Composition

1. Use a pencil to lightly sketch:
  - A **calm sea** with a **horizon line**.
  - A **sailboat** off-centre with a triangle sail and simple hull.
  - A **distant headland or coastal hill** on the right.
  - A small **village or lighthouse** on the hill.
2. Keep all shapes clean and basic. No shading or colour yet — just layout.



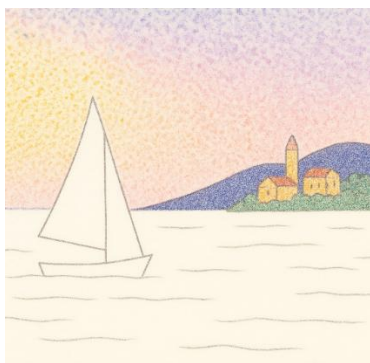
### Step 2: Paint the Sky Using Pointillism

1. Use a **small round brush** to apply small, evenly spaced dots.
2. Start near the **horizon line** with **light yellow and peach**.
3. Blend upward into **pink**, then **lavender**, finishing with **blue** near the top.
4. Apply only dots — do not brush or blend.
5. Do not colour the sea, boat, buildings, or land yet.



### **Step 3: Paint the Hills and Buildings**

1. Paint the **distant hill** using dots of **dark blue**, **purple**, and a touch of **green**.
2. Use **yellow**, **peach**, and **ochre dots** to build the **town's walls**.
3. Add **brown or red rooftops** with small dot clusters.
4. Leave the **sea and boat uncoloured** for now.



### **Step 4: Paint the Sailboat and Water**

1. Use **white and light peach dots** for the **sail**, to catch reflected light.

2. Paint the **boat hull** using **browns, navy blue, or grey**.
3. Fill in the **sea** with rows of **blue, turquoise, and lavender** dots.
4. Add **light yellow or orange dots** beneath the boat and near the horizon to suggest reflection.
5. Keep all dot work clean and consistent.

