

Painting Like Claude Monet

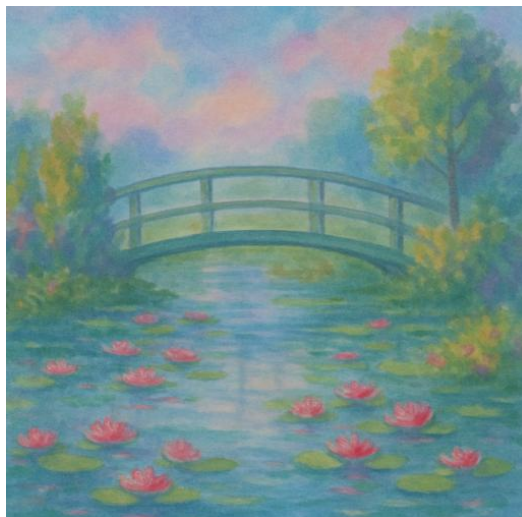
Who is Claude Monet?

Claude Monet was a French artist who started a new style of painting called **Impressionism**. Instead of painting tiny details, he liked to paint **how light and colour made a place feel**. His brushstrokes were quick and soft, and he often painted **gardens, ponds, flowers, and sunlight**.

Monet loved to paint the **same place again and again** to show how it changed in the morning, afternoon, or evening.

What Will You Make?

You'll paint a **peaceful garden scene** or a **pond with water lilies**, using **soft brushstrokes, gentle colours**, and lots of **light and reflections** — maybe just like this picture



You Will Need:

- White paper or canvas (A4 or bigger)
 - Paints (watercolour or watered-down acrylics work well)
 - Paintbrushes — a big soft one and a small one
 - A cup of water and tissue or cloth
 - Palette or plate for mixing colours
-

Painting Like Claude Monet

Step 1: Choose Your Scene

Pick something calm and natural, like:

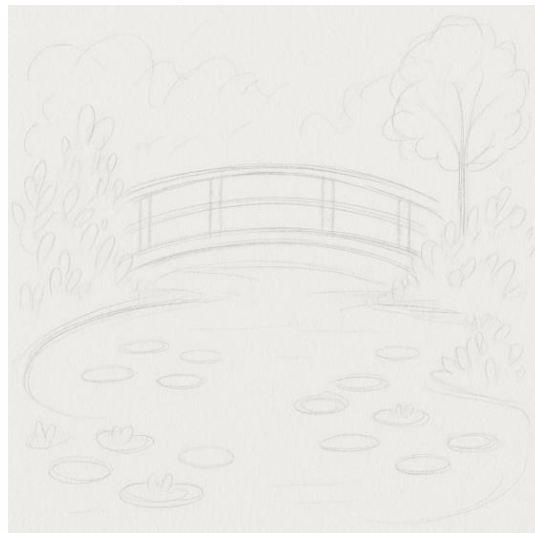
- A **pond with water lilies**
- A **bridge over water**
- A **flower garden**
- A **sunset sky over trees**

💡 **Tip:** You can look at a photo or just imagine your own nature scene!

Step 2: Lightly Sketch Your Scene

1. With a pencil, draw **a few soft lines** to show where things will go:
 - A pond shape
 - A little bridge
 - Some flowers or trees

Keep it light — you'll cover it with paint!




Step 3: Paint the Background First

1. Start with the **sky or water** — use soft colours like **blue, purple, pink, or green**.
2. **Blend the colours** together gently using lots of water and a big brush.
3. Dab your brush or **wiggle it softly** — no hard lines!

Painting Like Claude Monet

Step 4: Add Nature Details

1. Add **water lilies** with soft blobs of pink, red, or white. Use short dabs for petals.
2. Add **trees or bushes** with little taps of green, yellow, or purple.
3. If there's a **bridge**, use soft grey or brown with a small brush — keep it simple.

 **Tip:** Don't try to make it perfect! Monet's art looks a little blurry — he wanted it to feel **light and dreamy**.

Step 5: Add Reflections

1. In the water, **repeat some colours from the sky, trees, or flowers**.
2. Use **horizontal brushstrokes** to make the colours look like reflections.
3. Add a few dots or dabs for ripples in the water.

Painting Like Claude Monet



More Fun Ideas



Art Detective Game

Look at a Monet painting. Can you guess the time of day? What season is it? How does it make you feel?



Photographs

Identify one item/pot/plant in your garden which looks different at different times of day because of where the sun shines. Make a series of photographs of this item throughout the day, showing these changes.



Impressionist Painting Project

Use short, dabbed brushstrokes to paint a garden, pond, or sunset with bright colors.



Create a Water Lily Collage

Cut out lily pad shapes, blue paper for water, and flowers. Glue them together to make your own water lily pond.