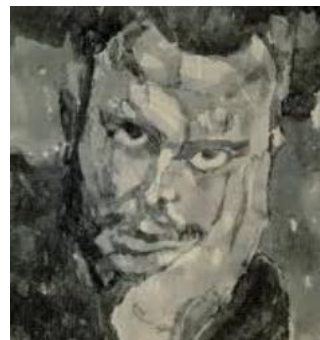


Paul Klee

What did Paul Klee create?

Paul Klee was an artist who loved **colour, shapes,** and **imagination**. His artwork often looks like **dreams, music,** or **puzzles**. He painted **animals, people, cities, and symbols**, but he didn't try to make them look realistic. Instead, he painted how they **felt** or how he **imagined** them.



Childhood

- Paul Klee was born in **Münchenbuchsee**, near Bern, Switzerland, in **1879**.
- He was **bilingual**, speaking both **German and French** from an early age.
- As a young boy, he was **more interested in music than drawing**, and was considered a violin prodigy.
- He kept **sketchbooks as a child**, which show early signs of his imaginative thinking.
- Klee loved to draw **fantastical creatures and strange worlds**, showing his creative mind.
- He enjoyed writing **funny poems** and invented his own **alphabet and symbols**.
- He often visited the **Swiss countryside**, which inspired his love for nature and landscapes.

Education

- In **1898**, Klee enrolled at the **Academy of Fine Arts in Munich**, a leading art school at the time.
- He studied under **Heinrich Knirr** and later the famous **Franz von Stuck**.
- Early on, he was frustrated with his drawing skills and considered himself a slow learner.
- During his travels in **Tunisia** in 1914, he had a major breakthrough in understanding **colour and light**.
- He also studied **etching and engraving**, and produced a book of surreal prints in his early years.

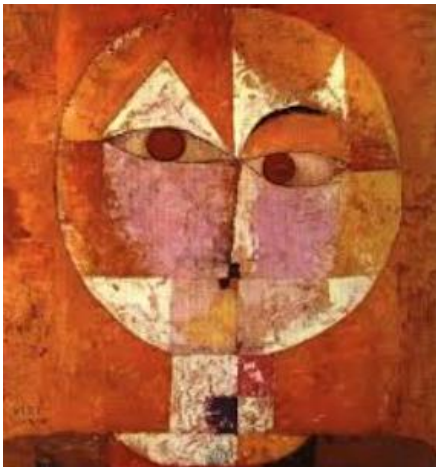
- Klee kept **detailed diaries** throughout his student years, which are now important art documents.
- He admired artists like **William Blake** and **Goya**, who inspired his imaginative approach.

Career

- Klee joined the **Blue Rider group** (Der Blaue Reiter) with artists like **Kandinsky** and **Franz Marc**.
- He taught at the **Bauhaus** from 1921 to 1931, where he influenced many future designers and artists.
- His art style is hard to define — he mixed **expressionism, surrealism, cubism, and childlike playfulness**.
- He created many works using **oil paint, watercolour, ink, and collage**, often mixing media.
- He returned to Switzerland in 1933 and continued to work despite being **seriously ill with scleroderma**.
- In his final years, he painted deeply emotional works about **life, death, and rebirth**.
- Klee's legacy includes over **9,000 works of art**, and he is still studied in art schools today.

Quotes from Paul Klee

- *"A line is a dot that went for a walk."*
- *"Art does not reproduce what we see. It makes us see."*
- *"Colour and I are one. I am a painter."*



Self
portrait



Castle and Sun



Red Balloon

