


Recreate “Road at Damiette” in Soft Pastels



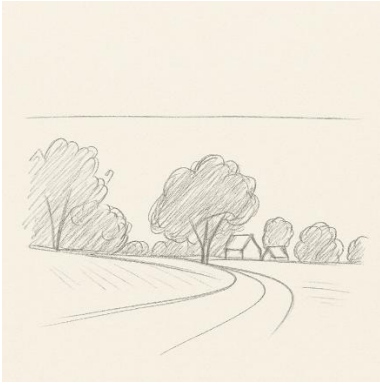
Materials Needed:

- A sheet of pastel paper (or textured paper)
- Soft pastels in: pink, orange, yellow, green, blue, purple, brown, black
- A tissue or your finger for blending
- A pencil for sketching


Step 1: Sketch the Landscape Layout

 Lightly draw the horizon line across your page (about one-third from the bottom). Then sketch:

- Curvy road starting from the bottom corner
- Bushy tree shapes on both sides
- Distant houses tucked into the trees



Step 2: Colour the Sunset Sky and road and fields


 Use soft pastels in **pink, orange, and yellow** to gently layer in the sunset sky. Add some **blue and purple** clouds. Blend softly with a tissue to create glowing skies.

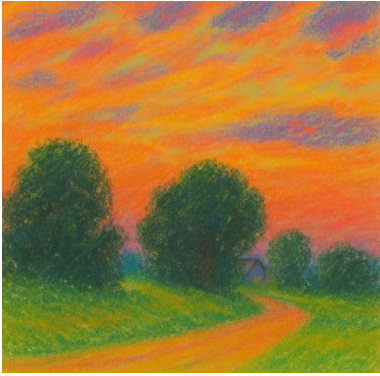


Blend lightly.




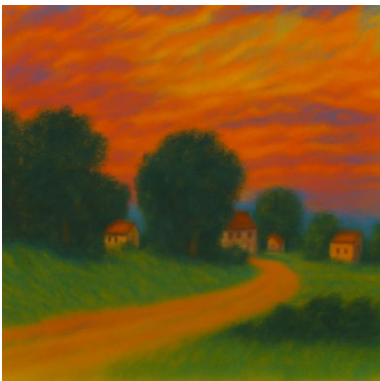
Step 4: Add the Trees and Bushes

 Use **dark green, blue, and black** pastels to draw the trees. Press lightly and build up texture by layering colours. Use small curved strokes to make the leaves look fluffy.



Step 5: Add Final Details

 Use **red, brown, and grey** to colour the little houses in the distance. Add dark lines for rooftops. Darken the edges of trees and bushes to make them pop. Use a white pastel to add light on tree edges or house roofs.



Tips:

- Don't worry about being perfect! The real artist liked bold colours and fun shapes.
- Blend with your finger or a tissue for soft skies.
- Layer colours gently, soft pastels work best when you build them up.