

Armand Guillaumin

Who Was He?

Armand Guillaumin (pronounced *Gee-yoo-la-man*) was a French artist known for painting colourful landscapes and everyday scenes.

He was part of the **Impressionist** and **Post-Impressionist** movements and was friends with other famous artists like Cézanne, Pissarro, and van Gogh.



👤 Childhood

- Born in Paris, France, in 1841.
- Grew up in a family that ran a shop, so money was often tight.
- His full name was Jean-Baptiste Armand Guillaumin.
- Moved to Moulins in central France as a child, where he first fell in love with natural scenery.
- Showed a talent for drawing from a young age, often sketching when he had free time.
- Had to work from an early age to help support his family.

🎓 Education

- Took evening art classes while keeping a full-time job
- Studied drawing while working as a shop assistant and then in the French railway.
- Attended the **Académie Suisse**, a free art school in Paris.
- Became friends with Paul Cézanne and Camille Pissarro there, both became lifelong friends.
- Learned to paint with loose, colourful brushstrokes rather than exact detail.
- Learned to paint outdoors ("en plein air"), which helped him capture natural light.

👨‍🎨 Career

- Helped start the **Impressionist movement**, painting light, colour, and outdoor scenes.
- Took part in the **first Impressionist exhibition** in 1874, and many more, with Monet, Degas, and others.
- Was part of the Post-Impressionist movement

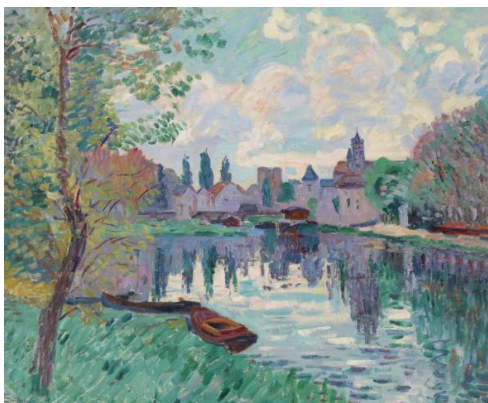
- His work influenced artists like **Vincent van Gogh**, who admired Guillaumin's colour.
- Won the lottery in 1891, which let him paint full-time without needing another job!

Quotes from Guillaumin

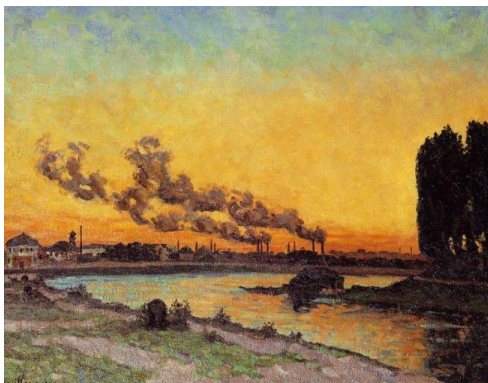
"I like to paint what I see, and what I see is colour and light."

"The sky is never just blue—it's violet, pink, orange, and gold!"

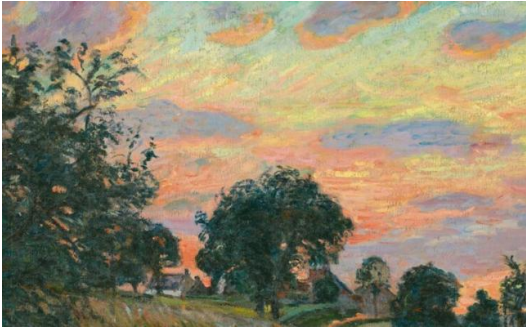
Art



Moret-sur-Loing



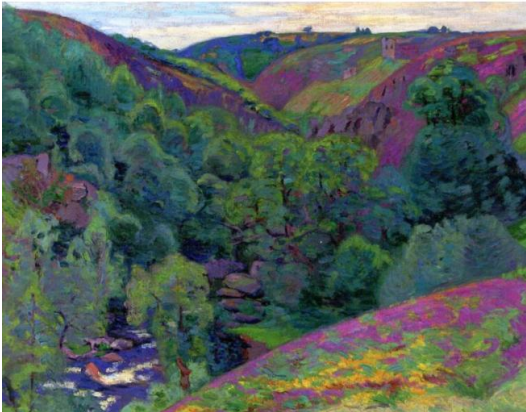
Sunset at Ivry



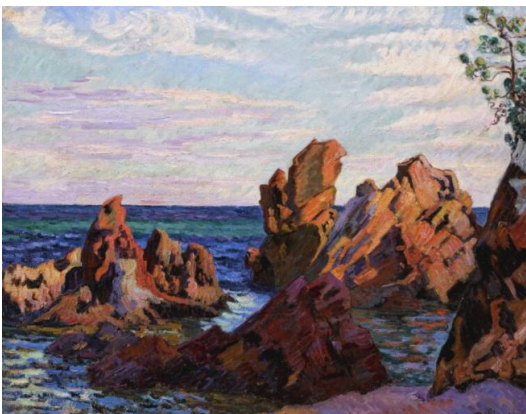
Road at Damiette



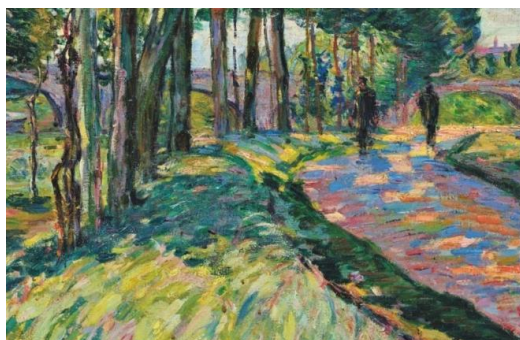
Hoarfrost, Crozant



Vallée de la Sédelle à la Folie, Crozant



The rocks at Île Bess



La Seine à Charenton (detail)